

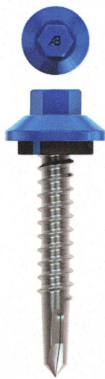
# Metal to Metal

We enhance metal connections



# Metal to Wood

We protect value by securing metal to wood



- Cast zinc head (*not capped*) prevents head failure during installation; excellent surface paint adhesion
- Special undercut entraps sealing washer, even when driven at extreme angles
- EPDM sealing washer is non-conductive minimizing "Halo" corrosion effect.

**UltiMate®**



- Use where corrosive environments require stainless fasteners
- Available in A, AB and B points
- Plated for lubrication during installation
- Ductility for High Stress Applications
- Made from 100% Domestic 304 Stainless Wire
- Made in USA

**304 Stainless**



- Lifetime Warranty: Zinc cast head warranted against Red Rust for the life of the building
- Cast Zinc Head (Not Capped) prevents head failure during installation
- Low Profile Design Fastener blends in with panel
- Special Undercut conceals washer even when driven at extreme angles

**#12 UltiMate®**



- Lifetime Warranty: Zinc cast head warranted against Red Rust for the life of the building
- Cast Zinc Head: (Not Capped) prevents head failure during installation
- Dekfast® Multi-Seal™ Washer: Provides 4 sealing points to assure positive seal even when driven at extreme angles
- Ideal for 5V roof applications
- High Major Threads with Low Minor Threads for enhanced pullout values

**#10 UltiMate®**



- Magnetic for use with standard socket drivers
- Bright hardened
- 410 Stainless Steel for Corrosion resistance
- Quick drilling
- Bonded EPDM washer

**410 Stainless SD**



- Flat on top stabilizes socket during installation
- Higher hex provides positive socket engagement
- Special undercut entraps sealing washer, even when driven at extreme angles

**FlatTop®**



- Interrupted thread design provides 20% more resistance against fastener backout
- Warranted against fastener corrosion when installed in CCA or ACQ lumber.
- Magnetic 410 stainless insures the fastener stays in the socket

**EnduraFast™**



- Type-17 Point easily penetrates lapped high tension steel
- Deep thread form for maximum pullout resistance
- Innovative hybrid threads cut through hard woods and knots
- Sealing washer is vulcanized metal washer with non-conductive EPDM rubber

**#14 WoodTite™**



- The Reverse Taper design features an extended flute that penetrates thicker materials while guiding chips away from the surface, eliminating clogging and reducing burn-out and waste.
- Innovative Tapered Compression Point technology provides an ultra-sharp cutting edge

**Ultra-Z™**



- Cosmetically appealing, low head height blends in with panel
- Head conceals sealing washer
- Wobble free Installation
- #3 Driver installs all sizes
- No pre-drilling required
- Available in TCP3 point style; Carbon and 410 Stainless Steel for corrosion resistance
- Coarse threads provide secure fastening into metal substrate

**[Low Pro]2® SD**



- Cosmetically appealing low head height blends in with panel
- Head conceals sealing washer
- Wobble free Installation
- #3 Driver installs all sizes
- No pre-drilling required
- Coarse threads provide secure fastening into wood substrate

**[LowPro]2™**



- Type-17 Point - Helps to quickly penetrate multiple layers of metal panels
- Aster Threads - Innovative hybrid threads cut through hard woods
- High Major Threads with Low Minor Threads for enhanced pullout values

**#10 WoodTite HLX™**



- Greater torque during installation
- Tighter fit on driver bit
- Coarse threads provide secure fastening into metal substrate

**Low Profile Pancake SD**



- Flat on top stabilizes socket during installation
- Higher hex provides positive socket engagement
- Special undercut entraps sealing washer, even when driven at extreme angles

**1/4 x 7/8 FlatTop® LAP**



- Greater torque during installation
- Tighter fit on driver bit
- Available in Carbon and 410 Stainless Steel for corrosion protection
- Coarse threads provide secure fastening into wood substrate

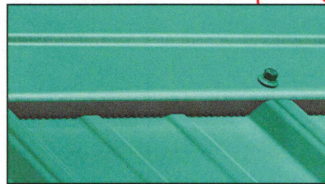
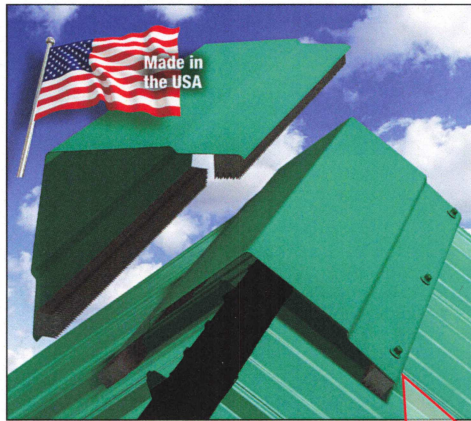
**Low Profile Pancake**



- Sharp Point to penetrate high tensile lapped steel
- Bonded EPDM washer
- Double lead thread design

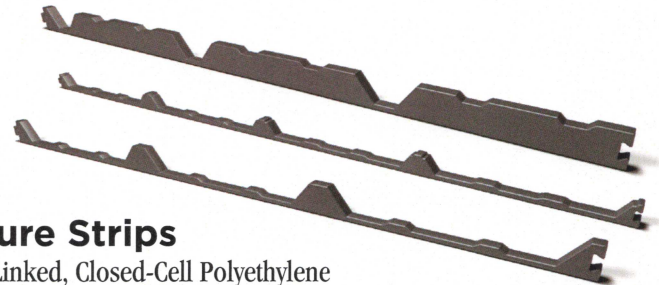
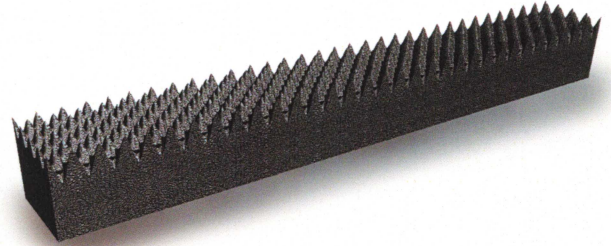
**#12 WoodFast**

# Accessories



## Atlas X-10 VersaVent®

- VersaVent comes in two sizes in lengths of 10 feet, mirroring the length of most ridge caps.
- The product is not profile sensitive, which allows for less SKU's and scrap material at the jobsite.
- VersaVent can be applied to the ridge cap by the roll former or while on the ground allowing for easier, quicker, and safer application.



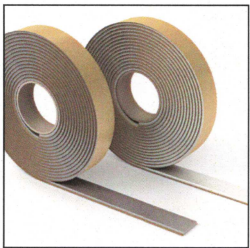
## Atlas Closure Strips

- Flexible, Cross-Linked, Closed-Cell Polyethylene
- Excellent Service Temperature Polyethylene
- Excellent Moisture Barrier
- Excellent Insulating Properties
- Remain Stable -100°F to +180°F



## DekTite® Roof Boots

- Superior design
- 20 year warranty
- High Temp and Retrofit models available
- Rapid installation
- Low profile

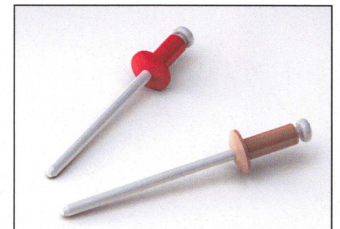


## Butyl Caulking Tape

A non-skinning, non-drying sealant of butyl-polyisobutylene base extruded compound with excellent physical and weathering characteristics. Retains adhesion and elasticity in weather extremes (-60 to 212°F) for prolonged periods. Excludes air, dust, ice, and water. Ideal for sealing laps on all types of sheeting.

## Buttonhead Rivets

Rivets in 25 colors are stocked in 1/8" x 3/16" All-Stainless (43)



**Atlas Bolt & Screw is the Market Leader and a full line fastener manufacturer and accessories supplier.**



[www.atlasfasteners.com](http://www.atlasfasteners.com)  
**800-321-6977**

ASHLAND, OH

FLAT ROCK, NC

HOUSTON, TX

SALEM, OR